

# CT DEEP FISHING REPORT NUMBER 8 6/1/2017



Smallmouth Bass (*Micropterus dolomieu*)



YOU CAN FIND US DIRECTLY ON FACEBOOK. This page features a variety of information on fishing, hunting, and wildlife watching in Connecticut. The address is [www.facebook.com/CTFishandWildlife](https://www.facebook.com/CTFishandWildlife).

**SHARE THE EXPERIENCE**  
Take someone fishing

## INLAND REPORT

**LARGEMOUTH BASS** fishing is generally fair to good, look for some post-spawn bass and many fish still on beds, with reports from Candlewood Lake (fishing's been good, topwaters in the morning have been working better recently), highland Lake (fair to good with some bigger fish being found), West Hill Pond (nice action), Wononskopomuc Lake (fair), Amos Lake (good) and Quaddick Lake (good). **Tournament angler** reports are from Amos Lake (fair to good for most, tough for some, 4.5 lb, 4.27 lb and 3.77 lb lunkers, fish averaged 2.4 lbs apiece for two clubs and 2.53 lbs for a third club), Gardner Lake (fair to good action, with a 3.85 lb lunker), Mashapaug Lake (good day for one club with 11 of 14 anglings bringing in 5 fish, with a 3.65 lb lunker), Moodus Reservoir (slow to fair fishing, a 3.5 lb lunker but nothing else of any size with fish averaging only about 1 lb apiece), Pachaug Pond (fair action, 3.19 lb and 2.85 lb lunkers), Candlewood Lake (fair to good for largemouth, lunkers included **7.16 lb**, 5.87 lb, 5.8 lb, 5.65 lb, 5.35 lb, 4.93 lb, 4.73 lb, 4.11 lb, 3.93 lb lunkers), East Twin Lake ("...fun day with a lot of small keepers...larger females hard to find", **7.69 lb lunker**), Highland Lake (fair to good for many, 4.25 lb and 3.69 lb lunkers), and Wononskopomuc Lake (fair to good, fish averaged 2.1 lbs apiece with 4.41 lb and 4.36 lb lunkers).

**Anglers- ALL** of your dollars invested in a fishing license goes to support fish, wildlife and forests!



State law (CGS 26-15a) requires 100% of the fees collected from the sale of sporting licenses to be allocated from the General Fund to the Department of Energy and Environmental Protection, Bureau of Natural Resources.

**Your investment makes a difference. Thank You.**

**SMALLMOUTH BASS.** Smallmouth are providing some action, with good to very good reports continuing from Candlewood Lake and fair reports from Highland Lake, Mashapaug Lake and Squantz Pond. **Tournament angler** reports are from Candlewood Lake (good fishing for most, 4.4 lb, 4.19 lb, 3.95 lb, 3.8 lb, 3.70 lb, 3.61 lb, 3.51 lb lunkers), Highland Lake (a few smallies in the bags, including a 4.22 lb lunker), Gardner Lake (a few caught, with a 1.55 lb lunker), Mashapaug Lake (some in the bags, averaging 1.5 lbs apiece)

**TROUT- RIVERS & STREAMS** –The weather continues to be ideal for keeping trout active and healthy. Fish are not temperature stressed and flows are more than adequate (an improvement over the past two years of drought), currently at or above typical early June levels (see *stream flow graphic on page 4*). Reports of quality fish are coming in statewide. Additionally, good action reported from the Coginchaug River and the West Branch Farmington River and fair action on the Hammonasset river (both day & evening providing action, with

fish being found in pools). Insect hatches are here and there with caddis now the “go to” fly. There are just a few Hendricksons on the Housatonic and Farmington rivers (flows are somewhat on the high side at both rivers). Late spring patterns like Light Cahills, midges, ants and of course BWO’s are working. Nymphing, especially caddis emergers and the usual suspects, Black Ghost, Slim Jim, Copper Johns and Hare’s Ears are working.

**Farmington River** –The weekend looks ideal for the Farmington with flows (311 CFS at Riverton plus an additional 204 CFS from the Still River) quite fishable, and just a bit higher than typical early June levels. Water temperatures are on the increase now in the mid to upper 50’s. Very good reports throughout the river with trout very active and willing to feed.

**Hatches/patterns.** Fish are rising with the boost in insect activity. Typical go-to flies this time of year include the Black Caddis and Blue Wing Olive. Others include Vitreus [a.k.a. pale evening dun] #14-16, from 5:00 pm to dark, Tan Caddis (#14-16) good all day, Sulphurs, (Invaria #14-16 hatches mid-day and Dorothea #16-18), Light Cahill (#12-18), March Brown nymphs (#10-14, during the day), Gray Fox (#10-14, afternoon), Blue Wing Olives (#18-24, mid-late afternoon), Caddis (tan #16-18, all day; green #22-26, evening), Midges (#20-32) and Pale Evening Duns (Epeorus vitreus #14-16, afternoon & early evenings). March Brown, Sulphur & Rusty Spinners are falling in the evenings.

**Housatonic River** – Flows are fishable, but on the high side (currently 1,430 CFS at Falls Village and 2,310 CFS at Gaylordsville), allowing for the fish to spread out- meaning lots of river to cover. Anglers can call FirstLight Power Resources at 1-888-417-4837 or check the USGS website (<http://waterdata.usgs.gov/ct/nwis/current/?type=flow>) for updated Housatonic River flow information (and also check with a local bait & tackle shop). Morning water temperatures are currently in the upper 50’s °F.

**Hatches/patterns.** Like the Farmington, Black Caddis (#10-12) March Brown (#10-12), Sulphurs (#14-18, evening), Blue Wing Olive (#16-18, cloudy days, early morning; spinner fall in evening), Cahill (#14, evenings), Adams (#12-16, evening), March Brown (#10-12, afternoon) and Gray Foxes (#14-16). Green caddis (#14-18, early morning & evening) are on the water. Midges and early golden stoneflies (#6-10) are also being seen at tributary mouths. Streamers (such as White/Yellow Zonkers or Woolly Buggers) are good options for fishing the current flows. Smallmouth are becoming more and more active and will provide a fantastic run on the “fly”.

**TROUT-LAKES & PONDS** – Decent action was found at West Hill Pond, Mashapaug Lake (lots of stockie-size fish) and Saugatuck Reservoir, good action at East Twin Lake and Crystal Lake, and ok fishing at Highland Lake and Beach Pond. Trout also being reported at Birge Pond, Chatfield Hollow, and Mohegan Park Pond (Norwich).

**CATFISH (CHANNEL AND WHITE)** are on fire. Following our annual catfish stocking on Tuesday, May 23, adult-sized (14-20 inches) are being caught in our Community Fishing Waters.

**WALLEYE & NORTHERN PIKE.** The night bite using live minnows or chartruse plastics produced some decent Walleye at Mount Tom and Squantz Pond (also fishing well from the causeway and the fishing pier, with some nice daytime action also reported). A few small pike reported from Bantam, Lillinonah, and Pachaug.

## FREE FISHING LICENSE DAYS

CAST IT FORWARD and take someone fishing on one of our two free fishing license days. These will be on Sunday **June 18, 2017** (Father’s Day) and Saturday **August 12, 2017** (NCLI and CARE Saltwater fishing event at Fort Trumbull State Park). **Anyone can obtain a free one-day fishing license to fish each of these days.**

The free 1-day license for June 18, 2017 is available through our mobile friendly online [sportsmen licensing system](#). Free Licenses for the August 12 date will be available starting on July 23, 2017.

**CHAIN PICKEREL.** Still very active and hitting top water along the thickening weed lines.

**COMMON CARP** fishing remains good in Batterson Park Pond, Lake Zoar, Lake Lillionah, Quinebaug River and Aspinook Pond.

**BLACK CRAPPIE** are becoming more aggressive hitting small Rapala and small jigs with good reports throughout the state. Look for a “slab” at your favorite fishing hole. Some really nice crappie are reported from Candlewood Lake

### CONNECTICUT RIVER

Flows are still quite a bit above early June levels and the water temperatures remains very cool for this time of year. **AMERICAN SHAD** are still throughout the river (have not entered peak spawn yet due to low water temps) with some times of good action reported. Willow leafs have been working. **STRIPED BASS** (schoolie-size and a few bigger fish) are being found throughout the river, but best action is in the lower portions.

**LARGEMOUTH BASS** are providing some action in the coves from just below Hartford to Haddam. Bass tournament action was slow to fair for one club, with a few fish in the 3-4 lb range, and better action (but only a 1.41 lb lunker) for a second club. **CHANNEL CATFISH/WHITE CATFISH** are providing solid action in the Connecticut River in Kenney Cove, the Haddam Meadows area, and Salmon River Cove. Check out the photos being posted to our CTFISHANDWILDLIFE Facebook page of 4-6 pound cats from the Connecticut River.

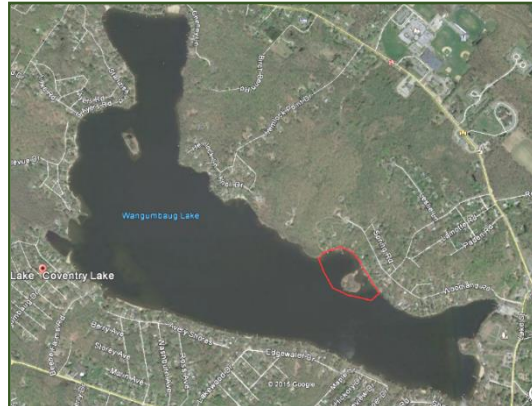
### NOTES & NOTICES:

**BRANFORD RIVER (boat launch).** The Branford River state boat launch continues to be closed for renovations. Alternative nearby launch sites include the Guilford Town boat launch and the East River State boat launch, both in Guilford.

**CONNECTICUT RIVER (invasive species alert).** Hydrilla was recently found in the main stem Connecticut River in Glastonbury (near Glastonbury’s Riverfront Park & Boathouse). See the Coventry Lake entry below for what river users should do to prevent spread of this invasive plant to other waterbodies.

**COVENTRY LAKE (invasive species alert).** Hydrilla, a very highly invasive aquatic plant, has been found growing in Coventry Lake. All lake users should take extra care to check and clean their boats (including canoes, kayaks and rowing sculls), trailers, and fishing equipment before leaving the boat launch, or leaving the lakeshore.

*Coventry Lake (Wangumbaug Lake) boaters should avoid the area outlined in red to avoid fragmenting and spreading hydrilla. This is only area in the lake where hydrilla has been found.*



**GLASGO POND (drawdown).** Glasgo Pond has refilled and the state boat launch is operational.

**LAKE LILLINONAH** – The annual lake clean-up organized by the ‘Friends of Lake Lillinonah’ will be held this Saturday, June 3<sup>rd</sup> staging from the Route 133 state boat launch (**this launch will remain open for use by the general public at all times during the clean-up**). Boaters should use additional caution both using the launch and out on the lake.

**MANSFIELD HOLLOW LAKE** – A high school hovercraft race is being held at Mansfield Hollow Lake on Saturday, June 3<sup>rd</sup> (raindate: Sunday, June 4<sup>th</sup>) from 10:00 am to 3:00 pm. Although the race will be conducted from the

state boat launch, room will be available to the general public to launch. Boaters should however use additional caution on the lake.

**QUONNIPaug LAKE (boating event).** The Guilford Public schools will be conducting a “student-built boat launchings & final exam” on Monday, June 5<sup>th</sup> from 10:30 am to 2:00 pm (raindate: Tuesday, June 6<sup>th</sup>). This activity will be in the area of the town beach/swim area.

**WETHERSFIELD COVE (fireworks).** The annual fireworks display is scheduled for Saturday evening, June 3 from 9 pm to 10 pm at Cove Park on Wethersfield Cove. Danbury Arm.

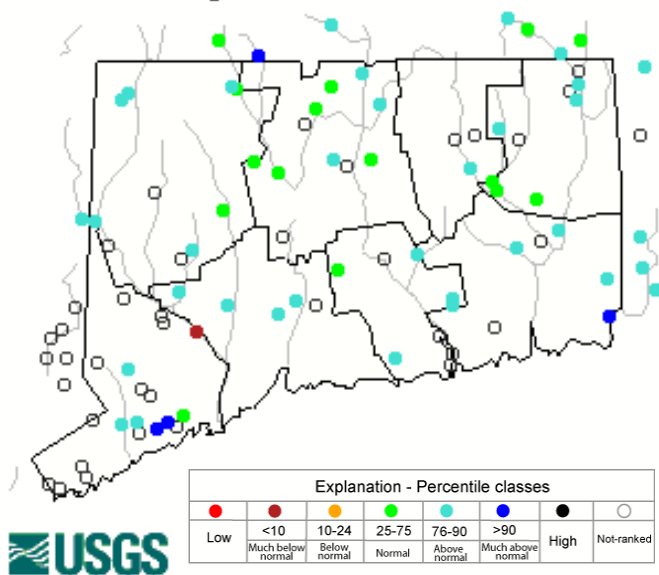
### TROPHY FISH AWARD PROGRAM:

DEEP’s [Trophy Fish Award Program](#) recognizes angler skill by awarding a bronze pin for your first trophy fish, a silver pin for your fifth trophy fish, and a gold pin for your tenth trophy fish. Angler of the year is awarded at our annual Trophy Fish Award Ceremony.

To see if your fish qualifies check out the criteria on page 13 of the [Angler’s Guide](#). If you have caught a trophy fish be sure to fill out the affidavit (page 12 of the Angler’s Guide) and submit the required photo(s) and form to us. Good luck!

### STREAM FLOW CONDITIONS

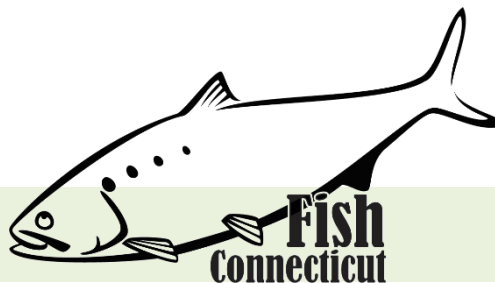
Thursday, June 01, 2017 12:30ET



Data in the state graphic to the left are generated by the United States Geologic Survey (USGS) and are available on line at: <http://waterdata.usgs.gov/ct/nwis/rt>  
*A percentile is a value on a scale of one hundred that indicates the percent of data in the data set equal to or below it. For example streamflow greater than the 75<sup>th</sup> percentile means only ¼ of the streamflow values were above the value and thus would be considered “above normal”. Stream flow between the 25<sup>th</sup> and 50<sup>th</sup> are considered to be “normal flows” and those 25<sup>th</sup> or less are considered to be “below normal”.*



## MARINE FISHING REPORT



Surface water temperatures in Long Island Sound (LIS) are around 60 °F. Check out the following web sites for more detailed water temperatures and marine boating conditions:

<http://www.mysound.uconn.edu/stationstat.html>

[http://marine.rutgers.edu/mrs/sat\\_data/?nothumbs=1](http://marine.rutgers.edu/mrs/sat_data/?nothumbs=1)

<http://www.ndbc.noaa.gov/>

<http://www.wunderground.com/MAR/AN/330.html>

**Connecticut State Boundary Line in Long Island Sound.** Anglers please note: Though Connecticut has reciprocity with neighboring states (New York, Rhode Island, Maine and Massachusetts), residents of Connecticut are required to have a CT Resident Marine Waters or All Waters Sport Fishing License to fish in the Marine District.

**STRIPED BASS** fishing continues to be good as the migration continues. Large cow bass continue to be caught throughout Long Island Sound (every reef is holding big fish). Striped Bass are in big numbers in from Stratford to Execution Rock off Greenwich. A variety of baits and lures are working but best catches this week anglers had used mackerel, bunker, spoons, Mojo rigs - and customers are catching Stripers this week from shore and jetties. Stripers are red hot and they are gulping up Cotton Cordell Pencils at Seaside Park, Silvers Sands State Park, Burying Hill in Southport as well as New Haven. Daiwa S P Minnows have also proved outstanding. Norwalk's Calf Pasture Beach Pier has been outstanding late May and expected to continue in June. Striper spots include Hempstead, Mamaroneck, Execution Rocks, Stepping Stone, the Weather Buoy, Can 32A, Pawcatuck River, Mystic River, Thames River, Niantic River, lower Connecticut River (**DEEP Marine Headquarters fishing pier and Dock and Dine**), Black Hall River, New Haven Harbor (Sandy Point), **Housatonic River and Norwalk/Saugatuck Harbor** including the islands. Try trolling bunker spoons on the reefs or better yet toss a chunk of bunker. Sand and blood worms have been working the best for "schoolie" bass. Casting swimming lures (SP Minnow – bone & sand eel color), small jigs (chartreuse color) with twister tails, soft baits, and Kastmasters and other metal lures will all work. The evening/night bite is fantastic with bait, including eels. The top-water fishing continues to be fantastic...Cotton Cordell pencil poppers in bone, blue back or black color.

**SUMMER FLOUNDER** (fluke) fishing is fair but improving with the arrival of squid. Montauk is fishing better than Block Island or Fishers Island. As squid continue to enter Long Island Sound...fishing will only get better. Fluke are loaded up from Westport to Norwalk Islands several doormats 10-12 pounds. Most recent 12-pounder was caught off Compo Beach using a Soro Bucktail w/ a Gulp attached. Also doormats are being caught by using Spro Bucktail tipped with Squid. Mid-sound anglers reported fluke from 2 to 9 lbs being common. Fluke really exploding Norwalk to New Haven with Bucktails tipped w/ Gulp and Spearing in shallow water. Fluke spots include the typical locations: Smithtown Bay, Buoy #26, south shore of Fishers Island (Isabella Beach, Wilderness Point), Napatree Point and along the beach, off the Stonington breakwater, mouth of the Mystic River to Groton Long Point, Thames River channel, Two Tree Island channel, Black Point/Niantic Bay/River, Long Sand Shoal, Westbrook-Clinton area, Falkner Island area, West Haven to Woodmont, New

Haven Harbor including by the breakwaters, off the mouth of the Housatonic River, and around the Norwalk Islands. Since squid are coming in, offering a live one on the bottom (10-40 feet) would be a good move for catching that big slab “doormat” fluke! Try drifting with a white or pink Spro Bucktail jig with a Berkely 3”- 4” Gulp Mullet in chartreuse, white or pink color. Fresh squid and or silversides (spearing) have also been producing. **Minimum size is 19 inches and the daily creel limit is 3 fish per person.** Fishing season is open May 17 to September 21. Time to get the boat, and fishing gear ready for some phenomenal early season fluke fishing. [CT Bait & Tackleshop List](#)

**BLACK SEA BASS** fishing is good and getting better in LIS. There a lot of big sea bass in the sound. BSB are everywhere but they are loaded up at buoy 32-A, and best lure/bait this week has been clams/sand worms. It’s going to be a great year! The early season hot spots are Falkner Island, the Middlegrounds, Buoy 32A, Green Ledge Lighthouse, Cockenoe Islands, Six Mile Reef and from New Haven to Woodmont. Fishing over any deep water structure in 30 to 100 ft around slack tide will produce some trophy-sized “humpbacks”. Fish shallower and you will catch plenty of keeper-sized sea bass. It’s important to continue to move from structure to structure to find these beautiful and awesome eating fish. Remember, **CT black sea bass regulations are as follows...15 inch minimum length, 5 fish daily limit from May 1<sup>st</sup> to December 31<sup>st</sup>.** Berkely Gulp (swimming mullet) on a jig along with squid and a spinner works great for these “Bucketmouths”.

**SCUP** (porgy) fishing fairly good on gravel bottom and rock bottom from shore in the western Sound. sand worms and clams on a high-low rig has been the winning ticket and trophy-size Scup being caught at Greens Ledge Lighthouse and Eaton's Neck. Fishing is fantastic south of Gardiners Island and the other north shore bays. Scup are piled up in Gardiners Bay, Cherry Point, Napeague Bay and the Peconics (Little Peconic) for spawning. Scup are really coming in (Long Island Sound) more each day and boats have been hitting them w/ squid, clams and sand worms. Many reports coming in from boaters having great action at Middle Passage, Norwalk Islands and Port Jefferson. Time to plan a trip on the many wonderful party/charter boats in CT. [CT Party Boat Association](#). I mean giant porgies measuring 14-19 inches (“hubcap size”) have been caught! Porgy fishing has also been reported at these shore fishing locations: Todd’s Point, **Sherwood Island State Park**, Rocky Neck State Park, Meigs Point Hammonasset State Park and Fort Trumbull State Park. Locate your favorite [Enhanced Shore Fishing Opportunities](#) for these excellent eating “Reef Slammers”. These “panfish of the sea” are easily caught on sandworms/cut squid or any other small piece of bait. Contact your [local bait and tackleshop](#) for updated fishing information.

**WEAKFISH** the bite is on in the West Haven area, especially at night using plastic baits and swimming lures. Other locations are...Branford/Guilford/East Haven/West Haven/New Haven Harbor (Sandy Point) over to the Woodmont/Milford/Stratford area along with the Peconics (NY).

**BLUEFISH** fishing is surprisingly good and getting better each day. The Race, Millstone Outflow, Plum Gut and the north side of Long Island including Gardiners Bay and the Peconics are the early season hotspots. Most of the local Long Island Sound reefs have many harbor-sized blues cruising around them.

**WINTER FLOUNDER** Try the Poquonock River at Bluff Point State Park, Niantic River, The Brothers, Jordan Cove, lower Saugatuck River, Calf Pasture Beach area, **Norwalk Islands (Cockenoe) and the channels in Norwalk Harbor**. Other flounder spots include the lower Mystic River, and the mouth of the Thames River in the Pine Island area including Baker Cove.

#### SHORE FISHING SPOTS & TIDE TABLE INFORMATION

To find a saltwater shore fishing spot close to where you live, go to the following website:

<http://www.lisrc.uconn.edu/coastalaccess/>.

For **Enhanced Opportunity Shore Fishing** sites and other fishing information including a site map go to the following website

<http://www.depdata.ct.gov/maps/saltwaterfish/map.htm>.

Please see page 64 of the **2017 CT Angler’s Guide** for CT tide information.

**STRIPED SEAROBIN** fishing is good in LIS for this “hardhead fish with spines and large pectoral fins”. These beautiful and strange looking fish are now very common especially when bottom fishing at many of Connecticut’s shore fishing sites. With many fish measuring over 20 inches, 3 pounds and “barking up a storm” (grunting noise they make when handling them). They love sandworms, squid and any live or dead bait. They are also very good to eat. Please be careful when handling them...be mindful of their spines located on top of their head and gill cover.

**HICKORY SHAD** fishing is fair in the lower Connecticut River by the DEEP Marine Headquarters fishing pier. Connecticut tarpon (hickory shad) can be found mixed in with schoolie striped bass. Flood or ebb tide is best and lures of choice are a willow leaf (silver), Kastmaster (single hook), small plastic jigs (white or chartreuse), and or shad darts in various colors.

**WHITE PERCH** fishing is fair in tidal rivers and coves along the Connecticut shoreline. Perch spots include the Pawcatuck River, Mystic River, Thames River, upper Niantic River, lower Connecticut River (DEEP Marine Headquarters fishing pier), Black Hall River, Lieutenant River, North/South Cove and Hamburg Cove. Shrimp and small worms (small piece of sand worm) are the keys to success. Fish the coves and back bays (slack water).

***For Current Connecticut Recreational Fishing Regulations:** Anglers should consult the 2017 Connecticut Anglers Guide which is now available at most Town Clerks Offices, DEEP offices and at tackle stores selling fishing licenses. Current regulations, electronic versions of the Angler’s Guide and additional information can all be accessed on the DEEP website at: [www.ct.gov/deep/fishing](http://www.ct.gov/deep/fishing).*

**PLEASE CALL 1.800.842.4357 TO REPORT FISHING VIOLATIONS.**

The Connecticut Department of Energy and Environmental Protection is an Affirmative Action/Equal Opportunity Employer that is committed to complying with the requirements of the Americans with Disabilities Act. Please contact us at (860) 418-5910 or [deep.accommodations@ct.gov](mailto:deep.accommodations@ct.gov) if you have a disability and need a communication aid or service; have limited proficiency in English and may need information in another language; or if you wish to file an ADA or Title VI discrimination complaint.

---

#### **DEEP WEEKLY Fishing Report**



**Connecticut Department of  
ENERGY & ENVIRONMENTAL PROTECTION**

79 Elm Street, Hartford, CT 06106  
[www.ct.gov/deep](http://www.ct.gov/deep)